

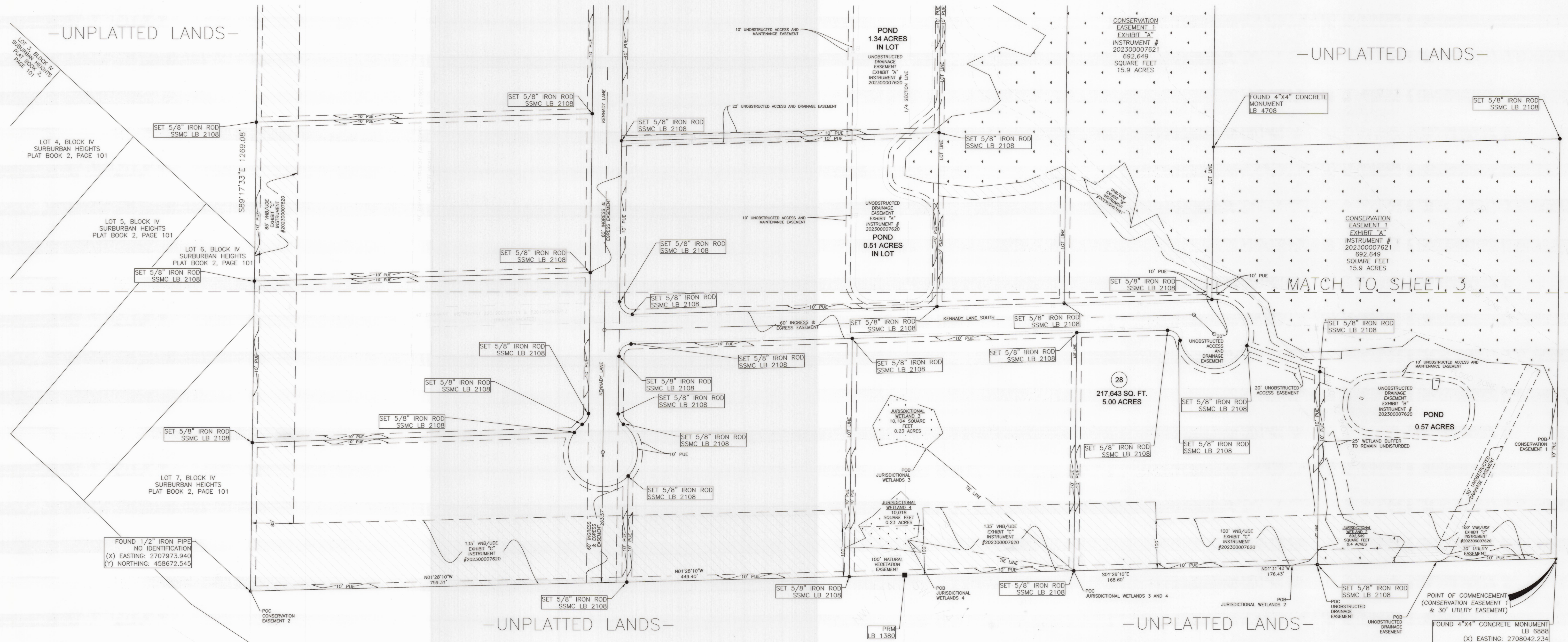
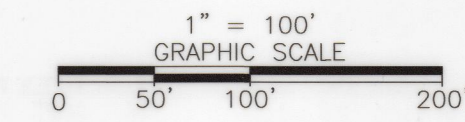
# Southern Estates Phase II

BEING A PORTION OF SECTION 13, TOWNSHIP 03 SOUTH, RANGE 21 EAST  
OF THE PUBLIC RECORDS OF BAKER COUNTY, FLORIDA

PLAT BOOK 4 PAGE 70

SHEET 4 OF 4

THIS MAP IS NOT COMPLETE WITHOUT SHEETS 1 THROUGH 4



LINE #	BEARING	LENGTH
1	N01°28'10"W	759.31'
2	N01°28'10"W	449.40'
3	S01°28'10"E	188.60'
4	N01°31'42"W	176.43'

CURVE #	RADIUS	DELTA	LENGTH	CHORD BEARING	CHORD DISTANCE
1	135'	102.84°	102.84'	N02°30'00"E	76.20'
2	100'	90°	100'	N00°00'00"E	100'

Parcel #	SQ FT	UPLAND	WETLAND
28	217,643	5.00	0.23

**LEGEND & ABBREVIATIONS:**

- = CONCRETE MONUMENT
- = IRON PIPE
- = IRON ROD
- = MAG NAIL & DISK

- ORB = OFFICIAL RECORDS BOOK
- PC(S) = PAGE(S)
- (P) = PLAT
- PSM = PROFESSIONAL SURVEY MANAGER
- PLS = PROFESSIONAL LAND SURVEYOR
- SSMC = SOUTHEASTERN SURVEYING AND MAPPING CORPORATION
- PB = PLAT BOOK
- PRM = PERMANENT REFERENCE MONUMENT
- PCP = PERMANENT CONTROL POINT
- LB = LICENSED BUSINESS
- TB- = TOP OF EMBANKMENT
- VNB = VEGETATIVE NATURAL BUFFER
- PUE = PUBLIC UTILITY EASEMENT
- PCP = PERMANENT CONTROL POINT
- LS = LICENSED SURVEYOR
- CMON = CONCRETE MONUMENT
- POB = POINT OF BEGINNING
- POC = POINT OF COMMENCEMENT
- UDE = UNOBSTRUCTED DRAINAGE EASEMENT
- [Dotted Area] = WETLAND CONSERVATION AREA
- [Rectangle] = STORM DRAINAGE STRUCTURE

PREPARED BY:

**SOUTHEASTERN SURVEYING AND MAPPING CORPORATION**  
8641 Baypine Road, Suite 5  
Jacksonville, Florida 32256  
(904) 737-5990 Fax (904) 737-5995  
e-mail: info@southeasternsurveying.com  
Certification Number LB2108

